

**\* We invite you to stand as you are able**

## **PRELUDE**

### **WELCOME & ANNOUNCEMENTS**

We invite members, friends, visitors to record visit by signing the attendance pad.

**A MOMENT OF SILENCE** (church bell tolls)

**INTROIT\*** "Come, Come, Everybody Worship" The Faith We Sing #2271

### **STATEMENT OF WELCOME TO ALL AND FOR ALL**

**All: No matter who you are or where you are on life's journey you are welcome here.**

### **CALL TO WORSHIP\***

One: We find it easy to say, "Yes, we will follow Christ."

**All: Sometimes discipleship makes uncomfortable demands on us.**

One: Yet, in all of this, Christ calls us continually to follow.

**All: He is present with us at all times.**

One: Let us place our trust always in his guidance.

**All: Let us open our hearts to his will and his ways. Amen.**

### **OPENING PRAYER\***

**All: Lord, from the very beginning of your creation, you breathed your love in to all that you made. You gave us the breath of life and asked us to be good stewards of all creation. You placed your trust and love in us. Help us to turn again with joyful hearts to you, placing our trust in all that you have done for us. Let us be a blessing for you. Amen.**

### **CHILDREN'S MESSAGE**

**OPENING HYMN** "Lord I Want To Be A Christian" Red Hymnal #402

### **SCRIPTURE**

Luke 14:25-33 (CEV)

Large crowds were walking along with Jesus, when he turned and said: You cannot be my disciple, unless you love me more than you love your father and mother, your wife and children, and your brothers and sisters. You cannot follow me unless you love me more than you love your own life. You cannot be my disciple unless you carry your own cross and follow me. Suppose one of you wants to build a tower. What is the first thing you will do? Won't you sit down and figure out how much it will cost and if you have enough money to pay for it? Otherwise, you will start building the tower, but not be able to finish. Then everyone who sees what is happening will laugh at you. They will say, "You started building, but could not finish the job." What will a king do if he has only 10,000 soldiers to defend himself against a king who is about to attack him with 20,000 soldiers? Before he goes out to battle, won't he first sit down and decide if he can win? If he thinks he won't be able to defend himself, he will send

messengers and ask for peace while the other king is still a long way off. So then, you cannot be my disciple unless you give away everything you own.

**MESSAGE** "At All Times & In Every Season" Pastor Anne Kadue

**HYMN** "Standing on the Promises" Red Hymnal #374

### **PRAYERS OF THE PEOPLE**

#### **CONFESSIONAL PRAYER**

**Forgiving God, we have messed up in so many ways. We have not treated this world or one another with compassionate love. We have turned our backs on situations of need in which we could have been instruments of help, healing, and peace. We have neglected service to others and have focused our lives on accumulating things and status. We have chased after false gods - greed, power, fame. Please forgive us, Lord. Refashion us to be your people, celebrating your love in service to others. For we ask this in the name of Jesus Christ. Amen.**

#### **SHARING OF THE PEACE & OFFERING**

#### **DOXOLOGY\***

**Praise God from whom all blessings flow;  
Praise God, all creatures here below;  
Praise God above ye heavenly host;  
Praise Creator, Christ and Holy Ghost. Amen.**

**THE GREAT THANKSGIVING** Red Hymnal Page 9-11

#### **THE LORD'S PRAYER**

**Our God, who art in heaven, hallowed be Thy name.  
Thy kingdom come, Thy will be done, on earth as it is in heaven.  
Give us this day our daily bread;  
And forgive us our sins, as we forgive those who sin against us;  
And lead us not into temptation, but deliver us from evil.  
For Thine is the kingdom and the power and the glory, forever. Amen.**

**CLOSING HYMN\*** "Tis So Sweet to Trust in Jesus" (v 1&4) Red Hymnal #462

**CIRCLE OF BENEDICTION\*** (extinguishing of candles & church bell)

#### **BENEDICTION\***

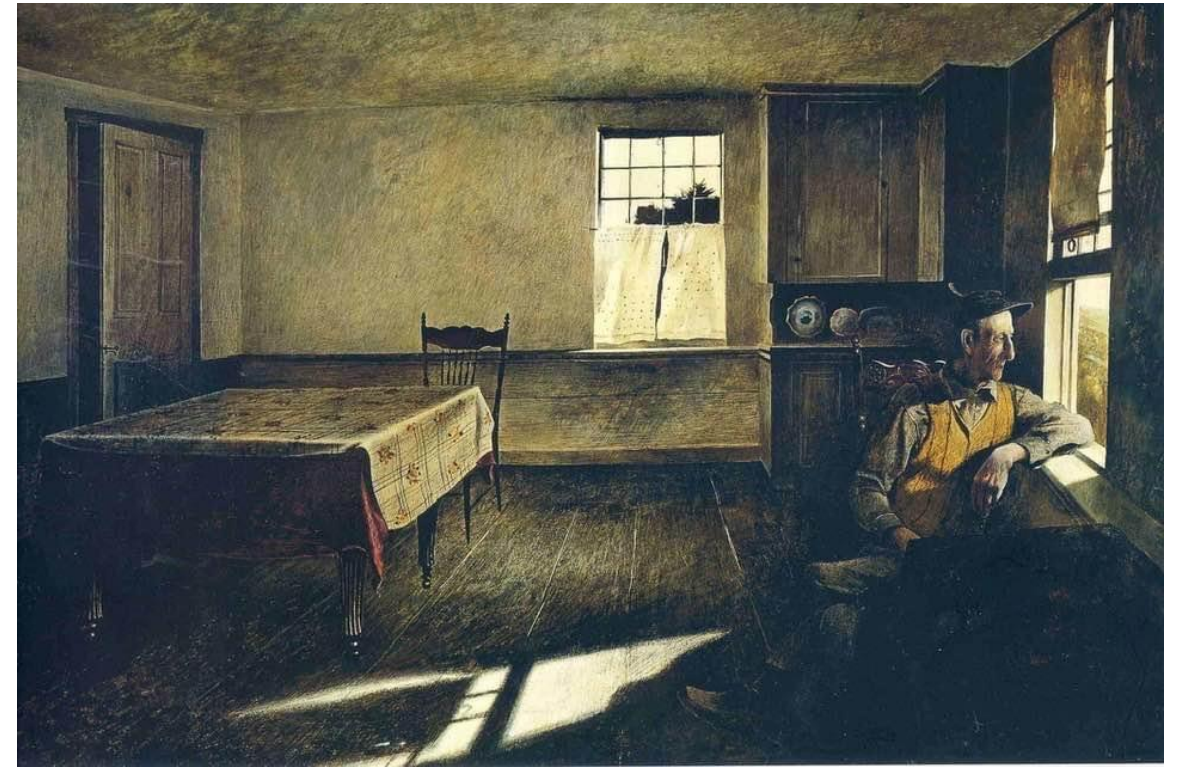
#### **POSTLUDE**

We welcome all persons of every age, gender identity, racial or ethnic background, sexual orientation, marital or socioeconomic status, nationality, and physical or mental ability into full participation in the life of this faith community. We are committed to the reconciliation of all persons as children of God and declare ourselves to be a Reconciling Congregation.

Large Print bulletins are available from the ushers.

#### CHURCH STAFF & WORSHIP LEADERS

Pastor Anne Kadue	Lead Pastor
Judy Lieffring	Pianist & Organist
Donald Birttnen	Tech Lead
Mike Nelson	Newport UMC Financial Secretary
Donna Zilge	Church Office Assistant



*You are loved.* ❤️

1596 11th Ave, Newport, MN 55055  
Newport UMC (651) 459-2747 & Community UCC (651) 459-2543

[newportumc.org](http://newportumc.org)  
[stpaulparkucc.org](http://stpaulparkucc.org)

**Welcome to  
Newport United Methodist Church &  
Community United Church of Christ**

The Thirteenth Sunday after Pentecost

September 4, 2022